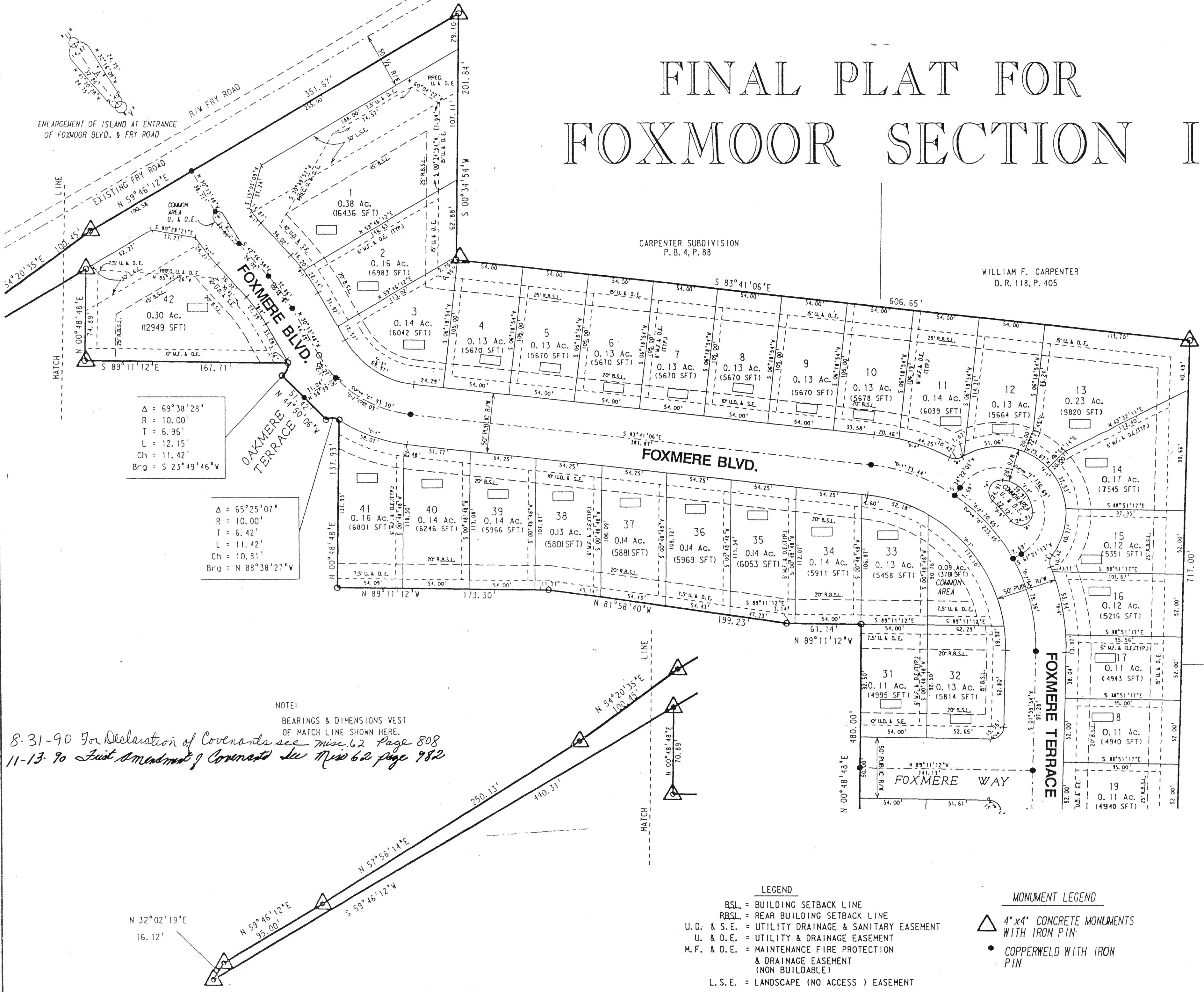


FINAL PLAT FOR FOXMOOR SECTION I



$\Delta = 69^{\circ}38'28''$
 $R = 10.00'$
 $T = 6.96'$
 $L = 12.15'$
 $Ch = 11.42'$
 $Brq = S 23^{\circ}49'46''W$

$\Delta = 65^{\circ}25'07''$
 $R = 10.00'$
 $T = 6.42'$
 $L = 11.42'$
 $Ch = 10.81'$
 $Brq = N 88^{\circ}38'27''W$

NOTE:
 BEARINGS & DIMENSIONS WEST OF MATCH LINE SHOWN HERE.
 8-31-90 For Declaration of Covenants see Misc. 62 Page 808
 11-13-90 First Amendment of Covenants see Misc. 62 page 982

- LEGEND**
- BSL = BUILDING SETBACK LINE
 - RBSL = REAR BUILDING SETBACK LINE
 - U. D. & S. E. = UTILITY DRAINAGE & SANITARY EASEMENT
 - U. & D. E. = UTILITY & DRAINAGE EASEMENT
 - M. F. & D. E. = MAINTENANCE FIRE PROTECTION & DRAINAGE EASEMENT (NON BUILDABLE)
 - L. S. E. = LANDSCAPE (NO ACCESS) EASEMENT

- MONUMENT LEGEND**
- \triangle 4" x 4" CONCRETE MONUMENTS WITH IRON PIN
 - COPPERWELD WITH IRON PIN

PREPARED BY
MSE Engineering
 MSE Corporation
 941 North Meridian Street
 Indianapolis, IN 46204-1061
 317 634-1000
 317 634-3576 FAX
 M.S.E. JOB # 111-0368
 SHEET 1 OF 3
 FINAL PLAT FOR FOXMOOR SECTION I